



Spectrum, Blackfriars Road

£1,300 PCM

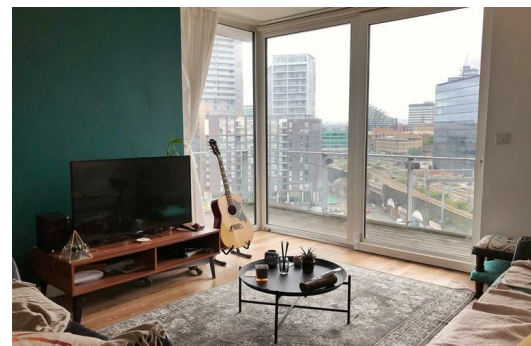
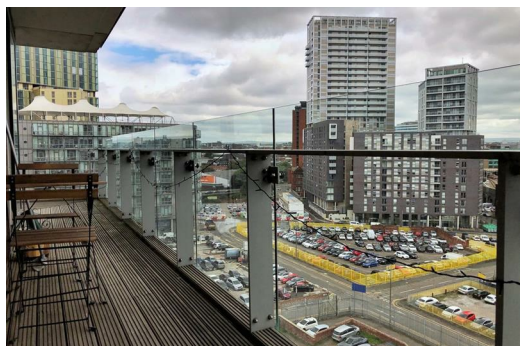
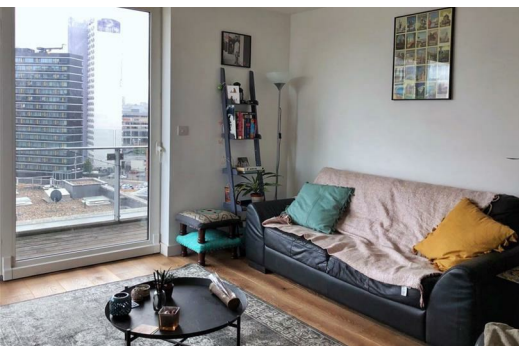
This stunning and spacious apartment is located in the highly sought-after Spectrum development.

Boasting two generous bedrooms, both of which open onto your very own private balcony, offering sweeping views over the surrounding cityscape. The bright and stylish open-plan kitchen and living area is perfect for hosting dinner parties, casual gatherings, or relaxed evenings at home. With two contemporary bathrooms, morning queues are a thing of the past, and a dedicated car parking space adds valuable convenience for city living. Every aspect of this apartment has been designed to combine comfort, style, and practicality.

The location couldn't be better. Just 500 metres from a range of boutiques and designer stores, and only a short stroll from Deansgate with its vibrant bars, restaurants, and nightlife, Spectrum puts you at the very heart of Manchester's action.

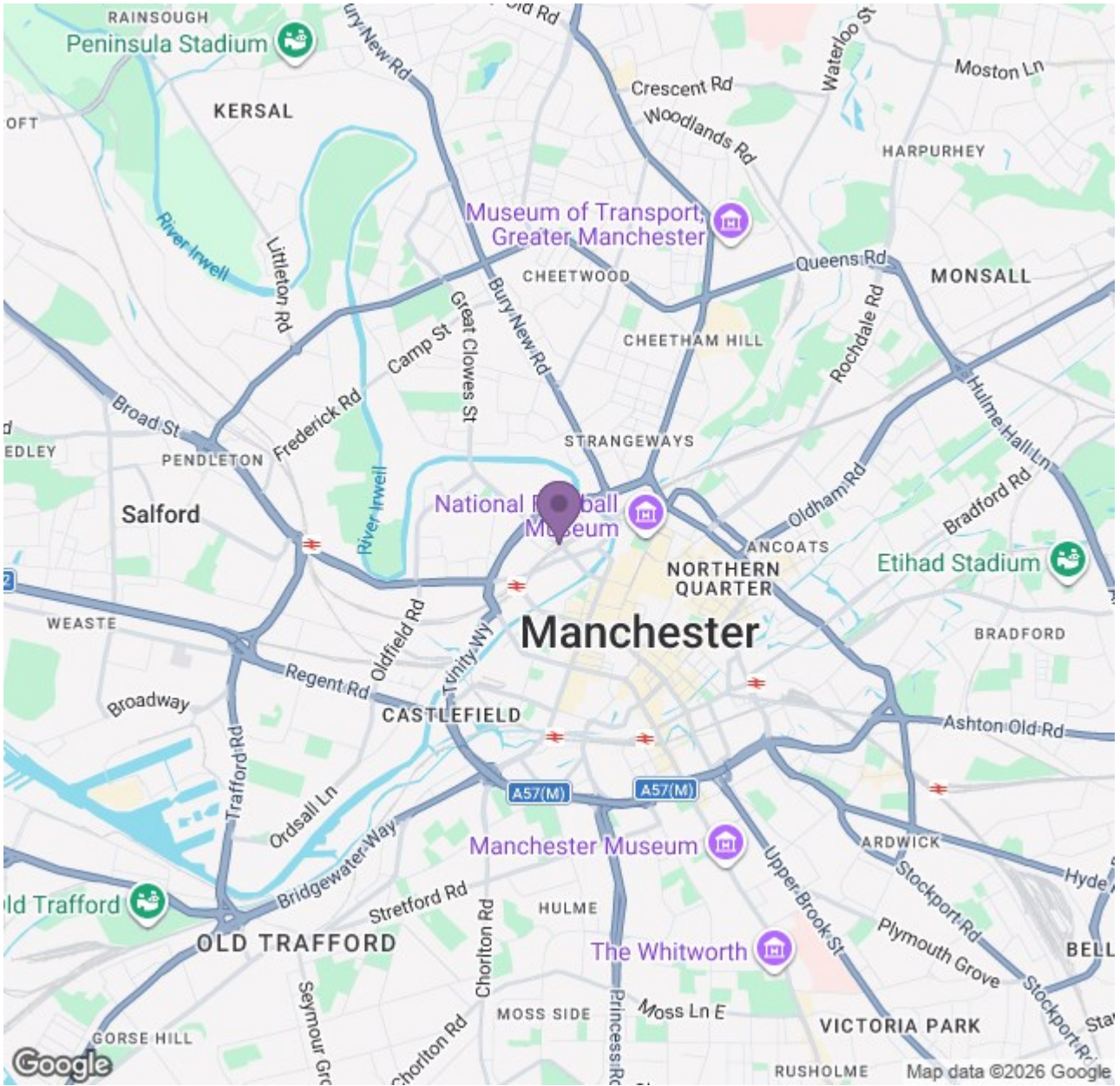
If you're interested in having a closer look, or have any questions, do get in touch. And just so you know, the pictures for this apartment are for marketing purposes only. The internal fixtures, fittings and furnishings may vary.

Available Now
Deposit: £1,500
Council Tax Band: D
Furnished



Ascend

Built on higher standards



Energy Efficiency Rating		Environmental Impact (CO ₂) Rating	
Current	Target	Current	Target
75	88	80	80

Ascend

Built on higher standards